

Edge Products

Installation Instructions

For the new



© 2007, Edge Products
All rights reserved.
Edge Products
1080 South Depot Dr.
Ogden, UT 84404
(801) 476-3343

www.edgeproducts.com

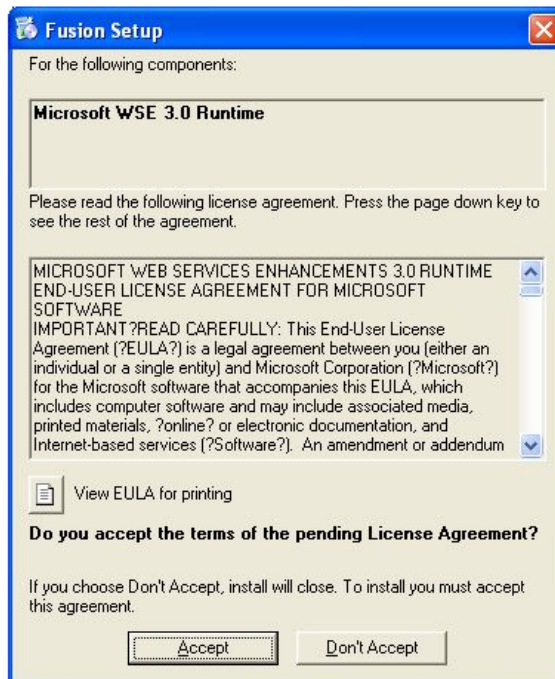
Manual Version 1

Overview

This installation is very straight forward and has been designed to walk users' through the process of downloading the software to update their product.

STEP 1.

Insert the Fusion CD into the disk drive, or download from edgeproducts.com; then on the monitor you will see the following display.



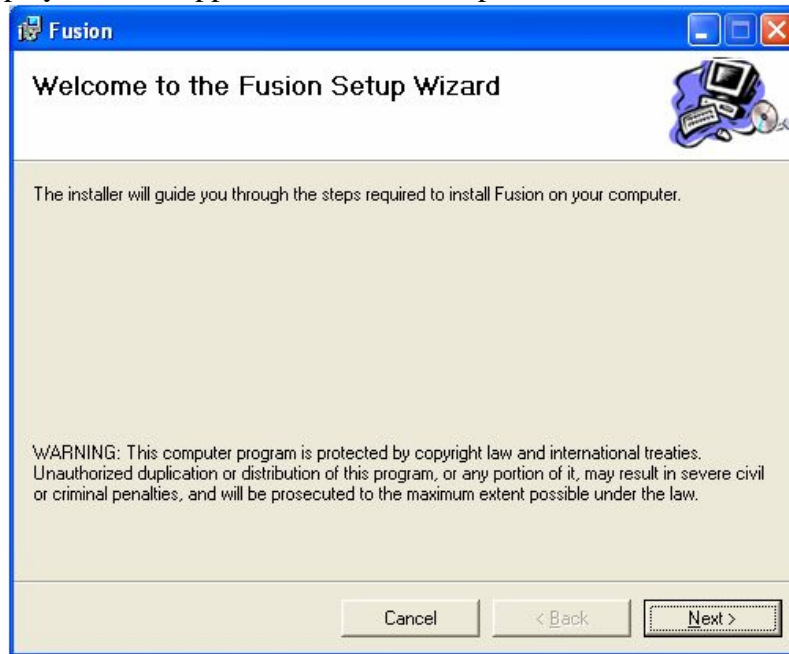
Continue by selecting the “Accept” tab; then fusion will start running the application, and some “Fusion setup” boxes will flash up on the screen.

STEP 2.

The next display that will appear is a Fusion Setup Wizard.

STEP 2.

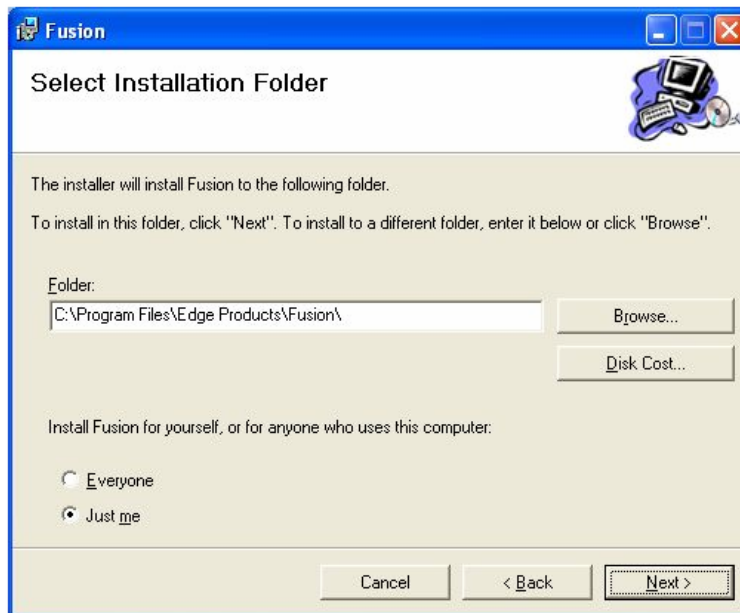
The next display that will appear is a Fusion Setup Wizard.



Once this screen is up hit the "Next" tab.

STEP 3.

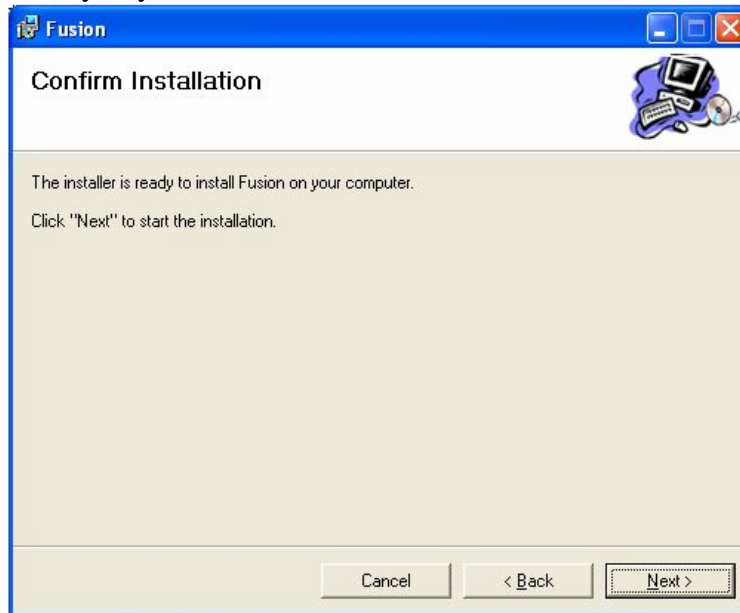
Then you will be sent to a Installation Folder window



Once again Click on the "Next" tab.

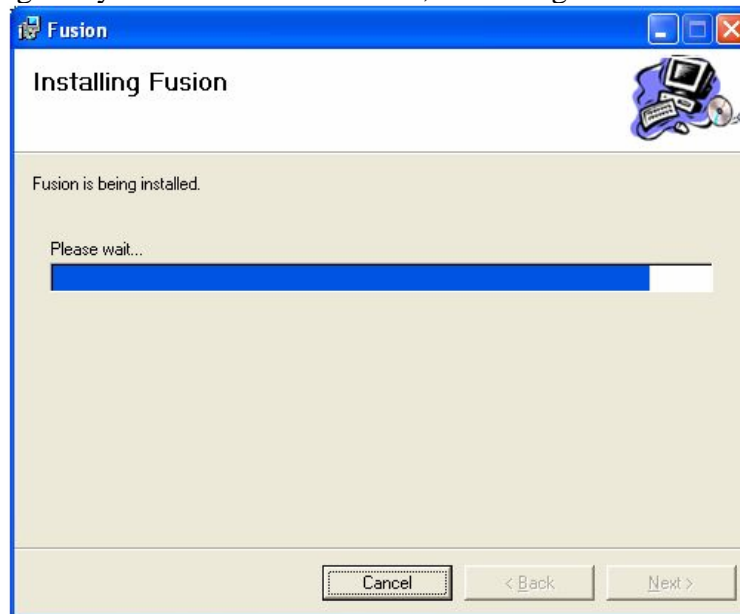
STEP 4.

Fusion will then ask you you to confirm the installation.



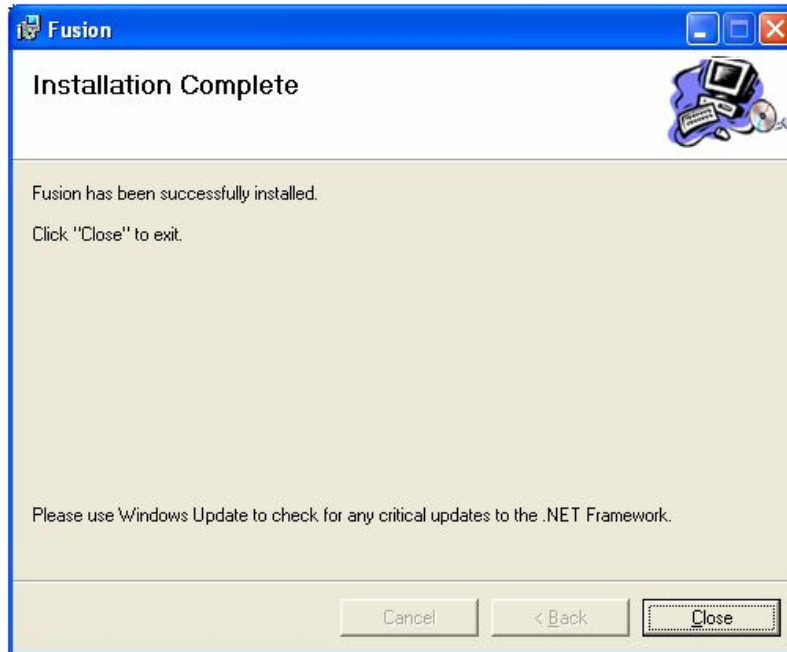
STEP 5

After confirming that you want to install fusion, it will begin the install.



STEP 6

Once the progress bar has completed another screen will appear stating that fusion has been installed.



Then select close to continue on to the Fusion software.

STEP 7.

Once steps 1-6 have been completed you should have a Fusion Icon on your desktop screen.



Click on the Icon above that is located on your desktop to launch Fusion software.

STEP 8

Once you have clicked on the Fusion icon, the next screen will appear, and where you will also select "Create a new user",



STEP 9

After selecting “Create a new user”, you should see the following box appear where you will enter your information.

email:	<input type="text"/>
First Name:	<input type="text"/>
Last Name:	<input type="text"/>
Address Line 1:	<input type="text"/>
Address Line 2:	<input type="text"/>
City:	<input type="text"/>
State Or Province:	Select state <input type="button" value="v"/>
Zip Code:	<input type="text"/>
Telephone 1:	<input type="text"/>
Telephone 2:	<input type="text"/>
Country:	United States <input type="button" value="v"/>
	<input type="button" value="Save"/>

Once you have confirmed your information click “Save”.

STEP 10

You then should be sent an email which will contain your password; if you do not see an email in you “Inbox”, then try checking your “Junk E-Mail” box. If you still do not see an email sent from Fusion, then call Tech Support 1-888-360 Edge(3343). If you have received an email, then write down the password in a place that you will not forget it,

and then return to your desktop screen where you will click on the “Fusion” icon and login with your email address and password.

STEP 11

Once you have logged in you should see the following screen.



Fusion will automatically look for software updates, and if there are any it will download them automatically.

STEP 12

Once Fusion is done updating, it will prompt you to connect the device.



STEP 13

Once you connect your device it may take you to an “Found New Hardware Wizard”.



This is so your device and your computer and communicate with each other. Select “Yes, this time only” , then click “Next”.

STEP 14



Select “Install the software automatically (Recommended)”, then click “Next”

STEP 15

Then the Hardware Wizard will perform a search.



The next dialog box you will see is a disclaimer from Windows XP.



Select "Continue Anyway".

From there it will start to download the software from the device.

From there it will start to download the software form the device.



When finished select “Next”.

Now the Hardware Wizard is complete.



Select “Finish”.

STEP 16.

After you have finished the Hardware Wizard, the Fusion software screen will reappear and look something like this.

After a few seconds the update screen will appear.



To update your device, just simply select “Easy”.

NOTE: On the very bottom of the Fusion window it will show you your current Model, Bootloader, Firmware, Calibration, and Serial number.

After you have clicked on the Easy tab, the updating of your device will begin. Fusion will go through 5 progress bars which should only take a few minuets.



Once Fusion is finished and all of the latest updates have been installed into your device, the following screen will appear.



Now you have successfully downloaded Fusion Software and updated your device all at once. Now the next time there is an update or if you just simply like to update because you can; all you would have to do is, connect your device to your PC, click on the Fusion icon on your desktop, then select the “Easy” tab and you will be on your way.